



SHRI  
JAGDAMBA  
EMBROIDERY  
PVT.LTD

100% In-House Schifli Embroidery  
and Dyeing. Faridabad, Delhi NCR.



**INDITEX**

*Creating work of  
of 'Art'  
Stitch by Stitch*



## ABOUT

# Who we are

---

Shri Jagdamba Embroidery is one of the few fully integrated Schiffli embroidery units in India. We handle everything inhouse - Sampling, Embroidery, Mending, Dyeing and dispatch from our facilities in Faridabad, Delhi NCR

We supply to leading global fashion brands and work with top domestic garment labels. Our setup is audit-ready, our machines are brand new, and every order is managed end-to-end by our team.



## OUR VISION

To be the most trusted Schiffli embroidery partner for fashion brands that need quality, speed, and clean production.

## OUR MISSION

- Deliver precise Schiffli embroidery that meets global buyer standards
- Handle everything in-house from dyeing to dispatch under one roof
- Make certified, sustainable production the standard

## THE PROBLEM

# Faced by Buying Teams?

Working with the mismatched embroidery vendor costs more than just money. These are the four problems buying teams face most.

### Limited Design Variety

Most vendors deliver the same standard patterns. No new development, no R&D, no options.

### High Defect Rates

Rework, mending costs, and rejects eat into margins and push timelines back

### No Design Development Support

Buyers have to arrive with a finished design. Vendors can't co-develop or suggest alternatives.

### Delays in Sampling & Production

When embroidery and dyeing happen at separate vendors, timelines fall apart

SHRI JAGDAMBA EMBROIDERY WAS BUILT TO FIX EXACTLY THIS

## OUR PROCESS

# From Brief to Dispatch - Everything In House

1

### DESIGN BRIEF

CAD development. We work from your brief or help develop the design if needed.

2

### SAMPLING

Lasser AG MVD 57, 5-metre sampling machine. Sample ready in 48 hours

3

### PRODUCTION

6 × Lasser AG MVD 75 machines, 21.5 metres each. High-volume, consistent output.

4

### IN-HOUSE DYEING

GOTS and GRS certified Dyeing facility ( Group Company - Shri Jagdamba Dyeing Mills Pvt. Ltd. ) No split between vendors.

5

### QC & DISPATCH

In-house mending and shearing. Every piece checked before it leaves.



## WHY THIS MATTERS

- One vendor. No handoffs. Full accountability on every order.
- Sampling in 48 hours. Production in committed lead times.
- Delhi NCR location easy coordination for domestic and export shipments.

AT A GLANCE

# Built for Volume and Precision



100% IN HOUSE SCHIFFLI  
EMBROIDERY & DYEING



2 LAC METERS + PER MONTH  
OF EMB FABRIC



100 CR + STITCHES  
ANNUALLY



BUYER-AUDIT  
COMPLIANT SETUP

**GOTS & GRS  
CERTIFIED**



Full documentation  
available on request



# What Makes Us Different

*Most Schiffli units work with basic greige cotton. We don't.*

## **CORD EMBROIDERY**

We've latest Cord Attachement On Schiffli Machines

## **VISCOSE YARN EMBROIDERY**

Gives a silk-like finish at a fraction of the cost.  
Ideal for occasion and export collections.

## **SPACE DYED YARNS EMBROIDERY**

Complex colour transitions in a single embroidery run, no multiple machine passes needed.

## **RECYCLED YARNS (GRS)**

For brands with sustainability requirements. GRS 4.0 certified, GOTS certified, Natural tones, consistent colour, premium hand feel

### **READY-TO-CUT**

Embroidery + dyeing together. Short lead times.

### **SWISS MACHINES**

Lasser AG - sharp, clean, export ready stitch quality.

### **DESIGN EXCLUSIVITY**

Your design is never shared with any other buyer.

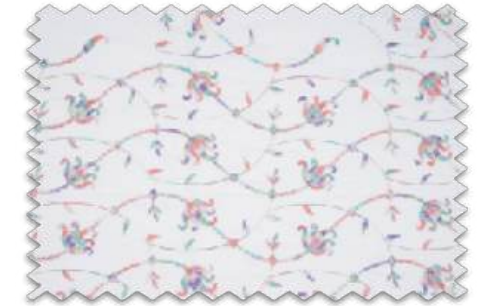
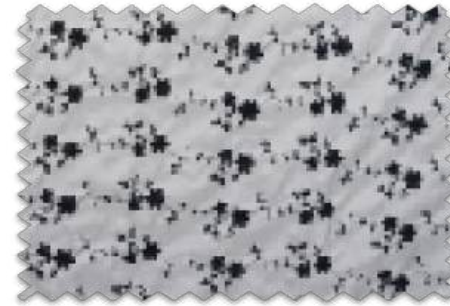
### **FAST SAMPLING**

Dedicated sampling machine. Sample in 48 hours.

## PRODUCT RANGE

# What We Make

Comprehensive range of embroidery types, fabric substrates, and yarns.



### EMBROIDERY TYPES

Allover  
Border  
Cutwork  
GPO Lace  
GPO Allover  
Cord Embroidery  
3D Embroidery  
Applique  
Multicolour

### FABRICS WE WORK ON

Cotton Cambric  
60s Cotton  
Voile  
Georgette  
Viscose  
Net  
Linen  
Chanderi  
Dobby Stripe /  
Denim

### YARNS

Organic Cotton  
(GOTS)  
Recycled Yarn (GRS)  
Dyed Cotton  
Viscose  
Multi-Colour  
2/30 Cotton Greige  
Dori Yarn

Design exclusivity guaranteed. Your design is never shown to or shared with any other buyer.

## INFRASTRUCTURE

# Production Capabilities

Our facility is built for scale, precision, and Audit Readiness.

1

### 6 LASSER AG MVD 75 MACHINES

21.5 metres each brand new, installed 2024. High volume production with Swiss precision.

2

### 1 × LASSER AG MVD 57 SAMPLING MACHINE

5-metre dedicated sampling machine. Samples ready in 48 hours.

3

### IN-HOUSE MENDING & SHEARING UNIT

Quality check and finishing handled on-site before dispatch.

4

### ERP-BASED ORDER PROCESSING

Real-time tracking from design brief through to dispatch

5

### EXPERIENCED DESIGN TEAM

Trained to handle intricate patterns and new design development from buyer briefs.



## OUR CLIENTS

# Trusted by Leading Garment Exporters and Buyers

The ZARA logo is displayed in a black serif font on a white background.The aurelia logo features the brand name in a lowercase, black, sans-serif font, with the 'i' in 'aurelia' having a small dot above it. The text is set against a yellow rectangular background.The logo for Aditya Birla Fashion & Retail consists of a red square with a yellow geometric pattern of triangles. Above the square is the text 'ADITYA BIRLA' and below it is 'FASHION & RETAIL'.A stylized yellow 'W' logo is centered on a red rectangular background.The MANGO logo is written in a black, uppercase, sans-serif font.The FATFACE logo is displayed in a bold, black, uppercase, sans-serif font.The TESCO logo features the brand name in a bold, red, uppercase, sans-serif font, with three blue diagonal stripes below the text.The Sainsbury's logo is written in a lowercase, orange, sans-serif font.The White Stuff logo is written in a black, uppercase, serif font, with 'White' on the top line and 'Stuff' on the bottom line.The Southern Tide logo features a blue fish icon above the text 'SOUTHERN TIDE' in a blue, uppercase, sans-serif font.The PRIMARK logo is written in a blue, uppercase, sans-serif font.The WESTSIDE logo features a stylized 'W' in a script font followed by the word 'ESTSIDE' in a black, uppercase, sans-serif font.

We supply global fashion brands and domestic garment exporters with consistent, audit-ready embroidered fabric.



## ENVIRONMENT

# Certified for Sustainable Production

We hold GOTS and GRS 4.0 certifications, verified by Control Union. We can process organic fabrics and recycled yarns for brands with sustainability requirements without increasing lead times or compromising quality. We are also transitioning to solar energy at our facility

- ✓ Certified organic and recycled production, GOTS and GRS 4.0
- ✓ Yarn development with sustainable materials, without adding cost
- ✓ Compliance documentation available for buyer audits on request
- ✓ Solar energy transition currently underway



GOTS & GRS  
CERTIFIED





# Ready to See a Sample?

Send us your brief and we will have a sample  
ready for you in 48 hours.

 0129-4324141

 [sales@sjepi.in](mailto:sales@sjepi.in)

 [www.shrijagdambaemb.com](http://www.shrijagdambaemb.com)



PLOT NO. 55, IMT MAIN ROAD,  
SECTOR 68, FARIDABAD, HARYANA 121004

Creating Work of Art, Stitch by Stitch